

# HP ShinePro

A premium paint thinner for superior gloss and adhesion

**> 10% improvement in gloss**

**Improved solvency of paints**

**Greater scratch and abrasion resistance**

Shine Pro is infused with unique formulation to significantly improve the solvency of the Thinner. This in turn reduces paint agglomerates and ensures a smoother finish. Since surface asperities are reduced, surface gloss is enhanced. The improved adhesion to surface also helps keep the paint layer uniform, enhancing mechanical stability as well as improving appearance.



**Delivering  
Happiness**

हिन्दुस्तान पेट्रोलियम



# HP ShinePro

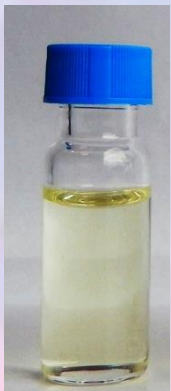
A premium paint thinner for superior gloss and adhesion

## Advantages

- Excellent solvency that significantly reduces thinner consumption
- Faster drying
- Superior adhesion properties provide superior resistance to abrasion, weathering *etc.*
- Superior gloss provides premium finish

## Key Differentiators

- Improved gloss (11% with normal paints and 7% with high gloss paints)
- High gloss Premium finish look with normal paints
- Superior scratch and abrasion resistance



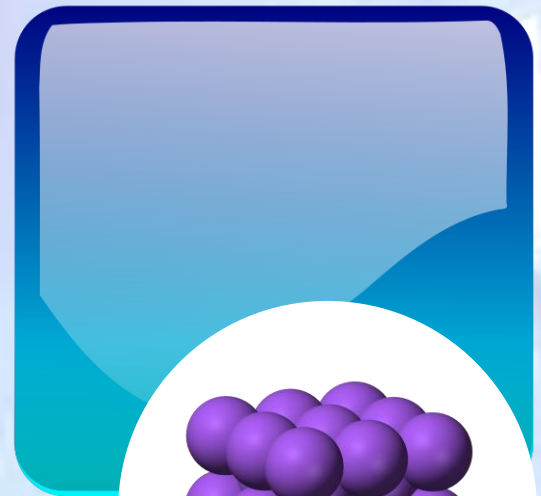
**Common  
Thinner**



**HP  
Shine Pro**

**Common Thinner**

**HP-Shine Pro**



Improved gloss from highly aligned surface molecules...



**Delivering  
Happiness**

